



Indiana
Department
of
Health

Closing the Gap of Health Inequities!

Friday, December 1, 2023

Antoniette Holt, MPH

Division Director

IDOH- Office of Minority Health

OUR MISSION:

**To promote, protect, and improve
the health and safety of all Hoosiers.**

OUR VISION:

**Every Hoosier reaches optimal health
regardless of where they live, learn,
work, or play.**



Office of Minority Health Mission

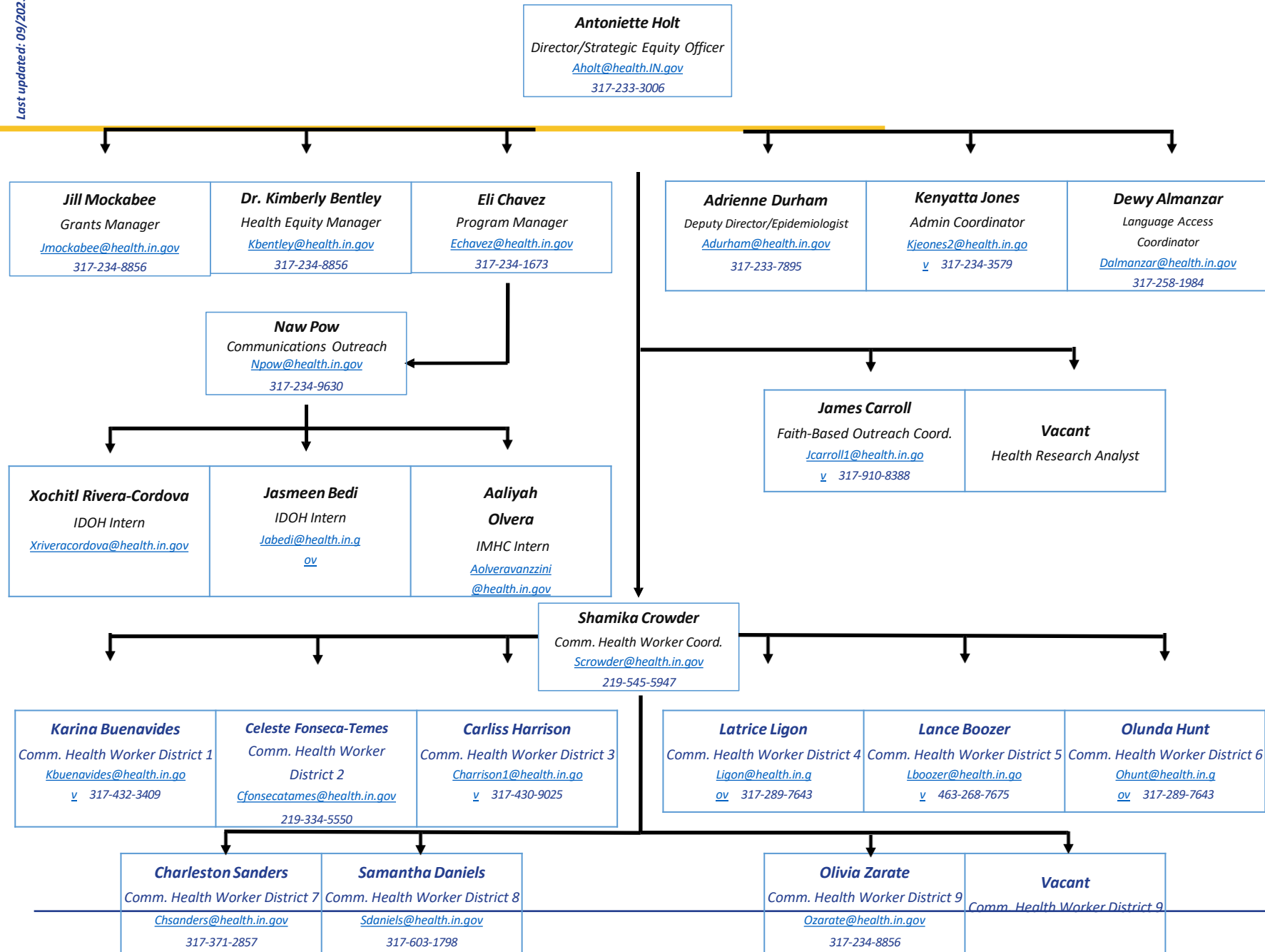
- To improve the health of all racial and ethnic populations in Indiana through increased awareness, partnerships, and the development and promotion of effective health policies and programs that help to reduce minority health disparities.



Health Equity and Health Disparities

- Health equity and health disparities are intertwined.
- Health equity means social justice in health
- Health disparities are how we measure progress toward achieving health equity.
- Moving toward greater equity is achieved by selectively improving the health of those who are economically/socially disadvantaged, not by a worsening of the health of those in advantaged groups.

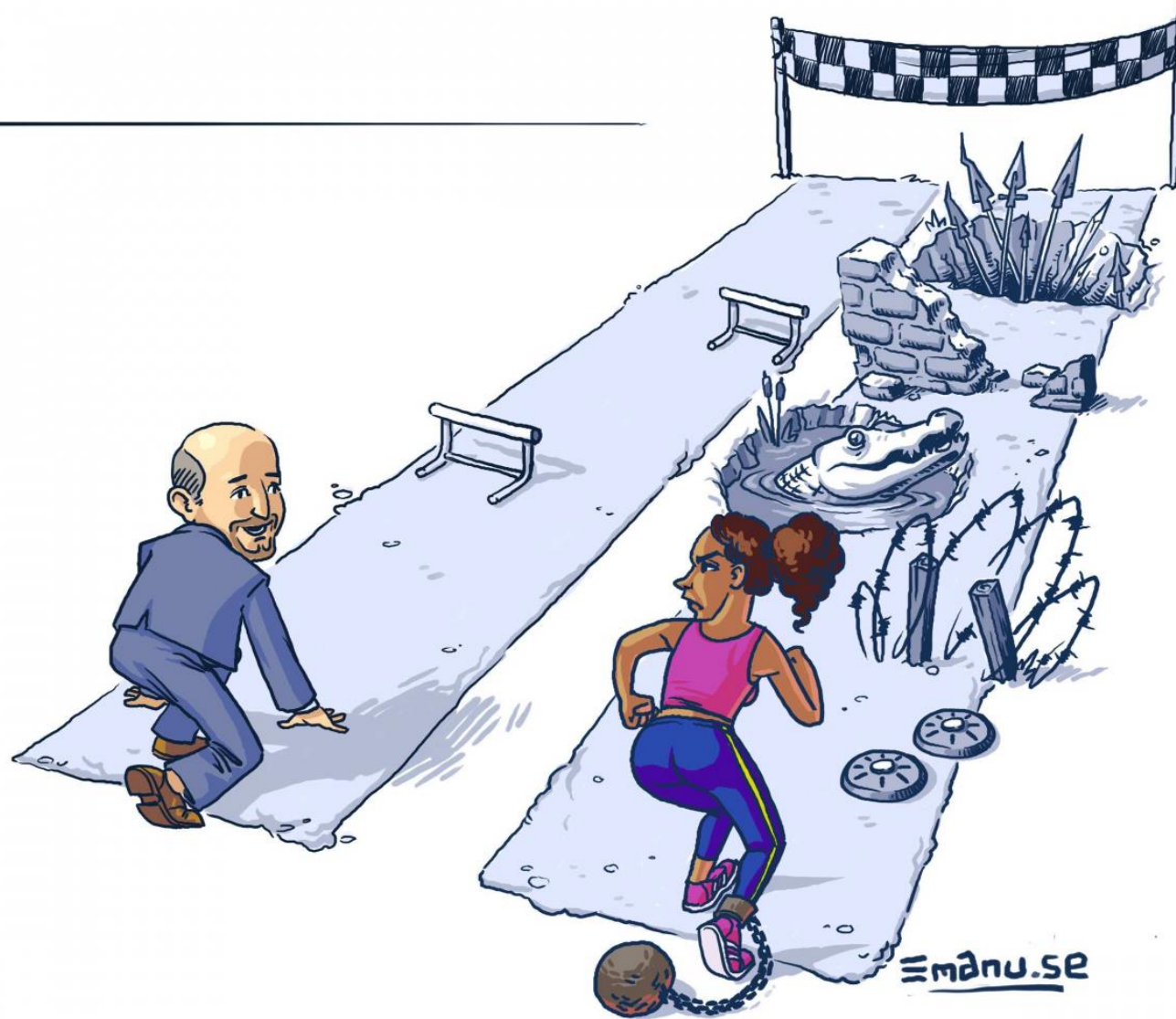
Whitehead M, Dahlgren G. *Concepts and principles for tackling social inequities in health: levelling up part 1*. Copenhagen: World Health Organization Regional Office for Europe; 2006. [\[Google Scholar\]](#)





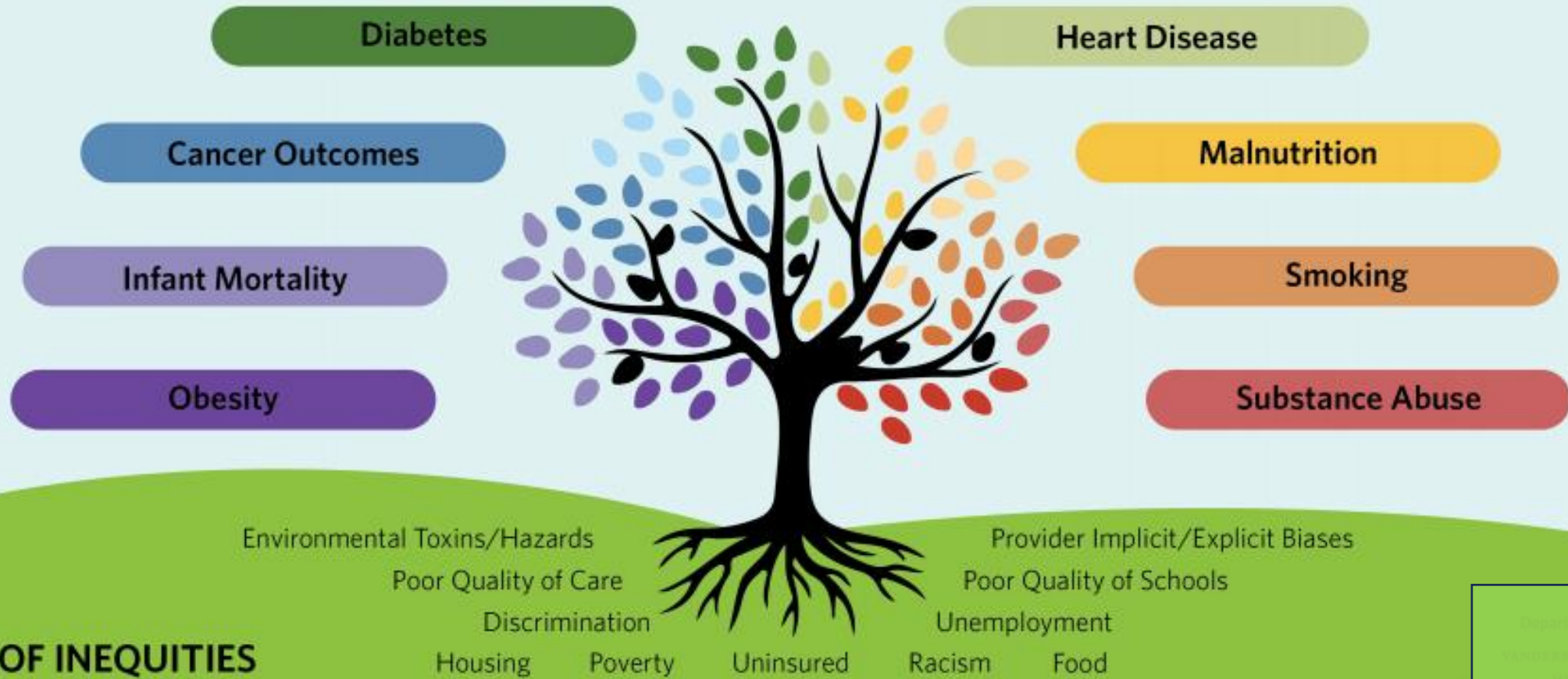
DEI
learning is
a journey –
not a race.

Barriers




“What’s the matter?
It’s the same distance!”

DISPARITIES IN HEALTH OUTCOMES



Department of Radiology
University of Michigan
Ann Arbor, Michigan

The Case for Improving Indiana's Health

Smoking and tobacco use	45 th		High school students using e-cigarettes	14.1%
Obesity	46 th		Youth with obesity	31.9%
Mental health	43 rd		Infant mortality rate	6.7 per 1,000
Childhood immunizations (by age 35 months)	41 st		Years of potential life lost due to injury	137,597
Overall health ranking	35 th		Heart disease deaths	191.2 per 100,000

Initiatives IDOH

Health First Indiana:

Health First Indiana transforms public health through a state and local partnership to deliver services at the county level.

Senate Enrolled Act 4, legislation passed by the 2023 Indiana General Assembly, provides Health First funding starting in 2024 so counties can determine the health needs of their communities and implement evidence-based programs focused on prevention. (\$75million in 2024 and \$150 in 2025)

Counties decide whether to opt-in to the new funding and to provide the core public health services, including trauma and injury prevention, chronic disease prevention, maternal and child health and more.

Initiatives Internal IDOH

**Health Equity Council
Language Access Plan
Equity in Pay Analysis
Climate Survey
Leadership Support
IHOPE**

Together We Will

- Centers for Disease Control and Prevention to help reduce the burden of the COVID-19 pandemic among racial and ethnic populations that have been disproportionately affected.
- Together We Will is focused on funding community projects impacting eight public health priority areas: Access, COVID-19 Vaccine Hesitancy, Environmental Justice, Infant & Maternal Mortality, Mental Health, Structural & Systemic Barriers, Substance Use Disorder, and Violence.

INDIANA HEALTH EQUITY COUNCIL COMMUNITY HEALTH WORKER MODEL FOR ADDRESSING COVID-19-RELATED DISPARITIES

Problem: COVID-19 widened health disparities

- Inadequate community health preparedness plan and community health workforce

Solution: Leveraged a multisector collaboration:

- Indiana Department of Health Office of Minority Health
- Indiana Community Health Workers Association
- Purdue University Community Health Workforce Development Institute

Infrastructure for the Indiana Health Equity Council (INHEC) Community Health Worker (CHW) Model

- Nine trained OMH Health Equity CHWs in nine state Public Health Preparedness Districts
- Generate and implement evidence-based efforts addressing COVID-19-related health disparities

Social Determinants of Health



Creating Equitable Solutions

Improving the health of the most vulnerable populations

Create policies to strengthen the states health

Invest in public health infrastructure

Involve community and its partners

Improve health care access and quality

How does policy impact our health and well being?

Access to healthcare:

- Health insurance coverage
- Medicaid expansion
- Promoting healthcare facilities in underserved areas

Social determinants of health:

- Equal access to education
- Affordable housing policies
- Fair employment practices

Prevention and public health:

- Vaccination requirements
- Tobacco control policies
- Nutrition standards in schools
- Workplace safety regulations

Environmental health:

- Pollution reduction policies
- Safe water and air quality regulations

Health equity and social justice:

- Reducing racial and socioeconomic inequalities
- Targeted resources for underserved communities
- Addressing systemic barriers to healthcare access

Health behavior and lifestyle choices:

- Restrictions on advertising unhealthy products
- Nutrition labeling requirements
- Promoting physical activity

Healthcare quality and patient safety:

- Establishing quality standards
- Patient rights policies
- Safety protocols in healthcare settings

Health information and technology:

- Health information privacy policies
- Electronic health records implementation
- Telehealth regulations

Internal Reflection

- Reflect on how health inequities impact health outcomes and the well-being of individuals.
- Review and discuss current policies at your institution or in your communities that targets promotion of health equity for all.
- Reflect on your personal perspective on the meaning of diversity, equity and inclusion.



“When a community starts to listen to each other, pull together, and work towards a common goal, then anything is possible.”

Chuck, MoveOn Mobilizer



**Indiana
Department
of
Health**

Antioniette Holt, MPH

Director, Office of Minority Health
Indiana State Department of Health
2 N. Meridian Street, Sec 300
Indianapolis, IN 46204
317-233-3006
aholt@health.in.gov

